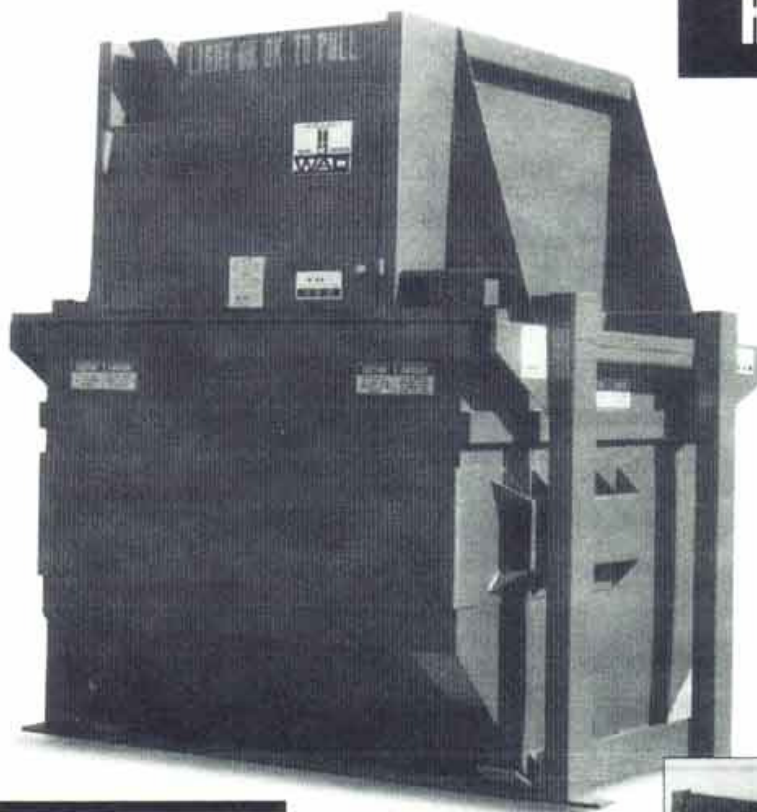


# ICIS

TITE  
WAD

## DURA-BILT VERTA-PACKER<sup>®</sup>

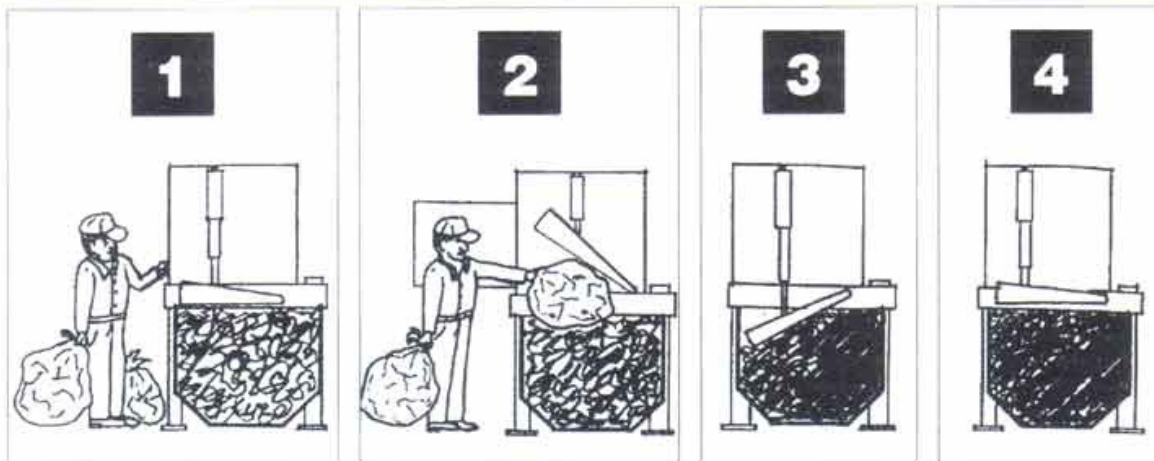
High Density



- Ideal for smaller volume waste generators of both wet and dry commercial or industrial waste.
- Design permits ease of loading for your employees and ease of service for your waste hauling company.
- Verta-Packer containers are liquid tight to their top lid, making them especially desirable for restaurants, schools, hospitals, cafeterias and other facilities with high liquid content waste and even higher sanitary standards.
- Easy open loading door is interlocked to prevent operation of the packer when the door is open.
- Available in 4, 6, and 8 cubic yard container sizes.



Easy open door  
Front feed shown is standard



**TITE  
WAD**

**DURA-BILT  
VERTA-PACKER**

### SPECIFICATIONS

Capacity	6 yard
Depth	77"
Overall width	102"
Overall height	102"
Loading height	64"
Charge box opening	48 x 26"
Ram face height	35"
Ram face width	47"
Ram stroke	40"
Cylinder size	4 x 16" — 2-1/2" rod
Ram penetration	20"
Operating pressure	1800 lbs. PSI
Packing pressure per square inch (PSI)	13.74 lbs. PSI
Total compaction force	22,608 lbs.
Cycle time	30 seconds
Motor	3 HP
Oil reservoir	5 gallon
Pump	5.22 GPM
Weight	4000 lbs. approx.

**Nationwide installations  
custom-fitted to any user requirements**

Design and construction subject to change without notice.

## User Benefits

- Verta-Packer offers improved housekeeping and cleanliness in your waste disposal area
- Reduces fire hazards
- Assures only your waste goes into your container—eliminates neighbor's usage—stops scavaging of your waste
- Reduces potential parking lot damage due to reduction in frequency of hauling service required
- Compaction provides extra capacity in the same size containers—very important on busy long weekends. No expensive weekend pickups
- Reduces opportunity for pilferage through your waste
- Frees parking spaces when more than one container had been required due to volume

## Optional Equipment

- Single phase power units
- Odor control systems
- Oil heater
- Thru the wall chutes
- Rear or side loading

**CAUTION!**

THIS COMPACTOR  
STARTS AND STOPS  
REMOTELY

**¡CUIDADO!**

ESTE COMPACTADOR  
IMPIEZA Y PARA  
REMOTAMENTE

For equal safety details see product literature 4-74-11 (Spanish)

**IDS**  
INDUSTRIAL DISPOSAL SUPPLY COMPANY

**San Antonio**  
P.O. Box 8175  
78208  
**210/227-3441**  
Fax 210/227-4424

**Houston**  
P.O. Box 8623  
77249  
**713/692-7289**  
Fax 713/692-7996

**Piano (Dallas)**  
P.O. Box 860707  
75086  
**800/452-1423**  
Fax 972/424-7203