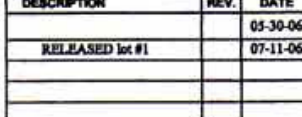
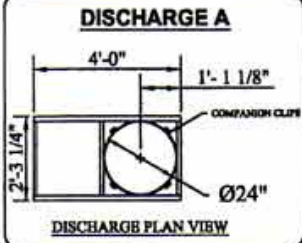
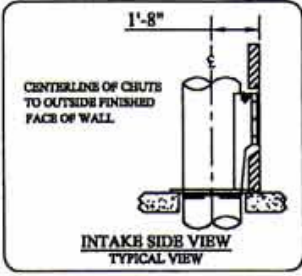
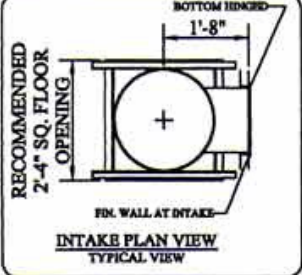
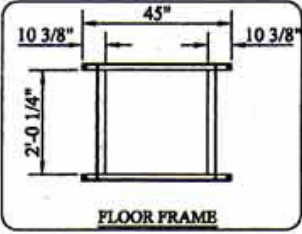
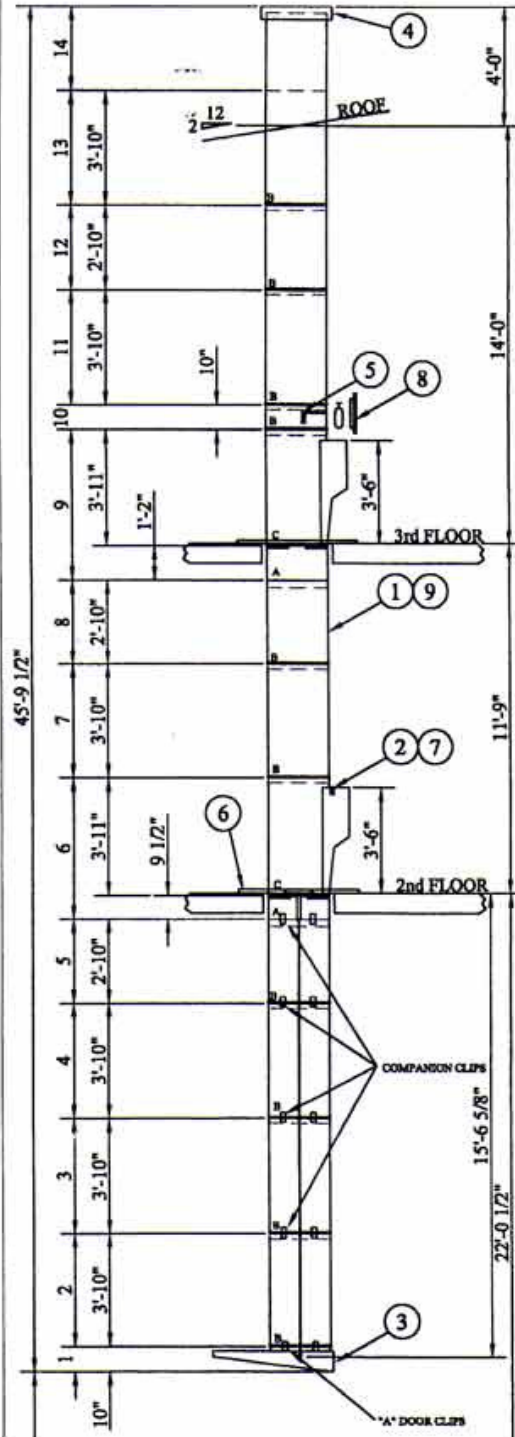


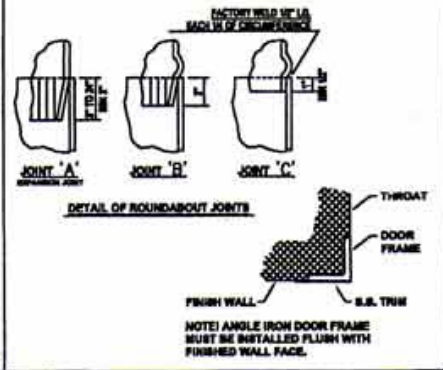
DWG. 3644

- 1ST TRANSMITTAL
- REVISE & RESUBMIT
- WARRANTY
- ROOF FABRICATION



ALL NUMBERED ITEMS TO BE FABRICATED	GENERAL NOTES:	QUANTITY
1	Chute to be fabricated of 16-Ga Type:AL/Stl 24" Dia.	1
2	Typical Intake 21" x 18" high BOTTOM hinged hand operated, noiseless, self-closing Stainless Steel UL 1-1/2Hr. "B" Label	2
3	Discharge Type "A" with horizontal inclined, insulated rolling steel door held open by fusible link.	1
4	Full dia. vent with flashing and metal band. Fabricated of 16-Ga Type: AL/Stl. including a screen-type cap. W/ PITCHED FLASHING	1
5	3/4" IPS flushing spray head located in channel above top intake ready for connection by plumber.	1
6	Typical chute support-4" x 2" clips welded to chute tube supporting each story of chute height from structural frame. Fabricated of 2" x 2" x 1/4" angles WELDED ASSEMBLY ALL ANGLE FRAME	2
7	Intermediate 1/2" IPS-155° fusible linked automatic sprinklers located at floors 3 & 2 for connection by fire protection.	2
8	Disinfecting and Sanitizing Unit provided by Wilkinson Hi-Rise, L.L.C. where designated on chute elevation. Vacuum breaker and valve by others. 15" x 15" "B" Label Access Door.	1
9	Chute to have one shop spray coat of sound dampening and isolator floor frames with pads.	1

**LOT #1
ENTIRE CHUTE FOR BUILDING A**



FIELD NOTE
ENCLOSING WALLS AND/OR CHUTES ARE NOT TO BE SELECTED UNTIL AFTER CHUTES IS INSTALLED

NOTE
CONTRACTOR TO VERIFY AND APPROVE ALL DIMENSIONS ON THIS DRAWING WITH CONDITIONS AT THE JOB SITE. WILKINSON HI-RISE IS NOT RESPONSIBLE FOR DEVIATIONS FROM THIS DRAWING ONCE APPROVED

DESCRIPTION	REV.	DATE	INIT.
RELEASED lot #1		05-30-06	M.C.
		07-11-06	M.C.

ONE RUBBISH CHUTE	
JOB	THE DOMAIN BLDG A AUSTIN, TX
JOB #	3644